

Terminal Server Setup - Windows 2008 (please read entire document before proceeding)

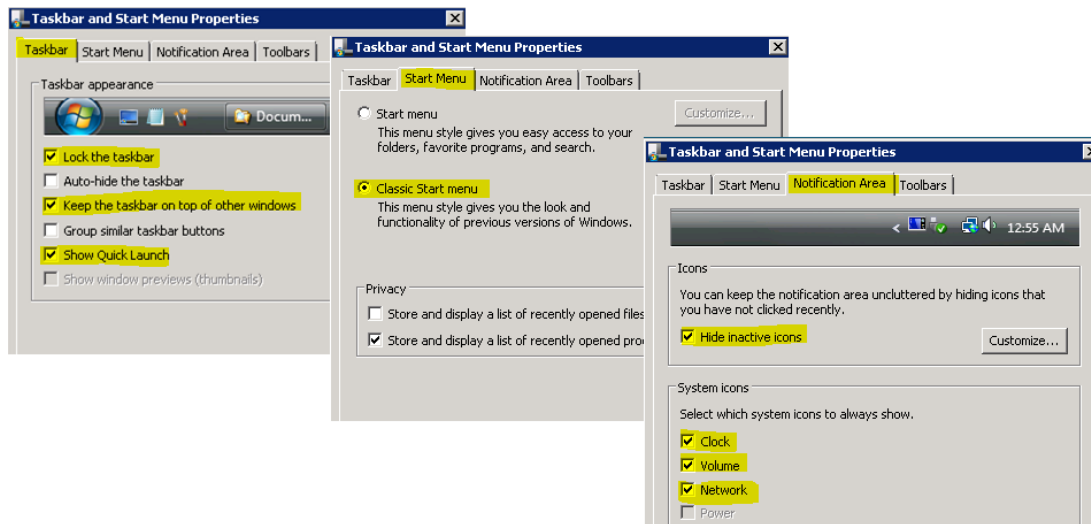
Setup Terminal Server

1. All Users require their own unique Windows profile on the Terminal Server.
2. Keep Usernames simple with no spaces: eg: **user1, user2, user3, user4** etc..
3. Download Thinstuff TS package “**XP/VS Terminal Server Standard**” (Not Lite)
https://www.thinstuff.com/licensing/index.php?selected_product=16;14;15

Setup Each Windows Profile as follows

- Log into each profile and.....

- Set Regional date settings for each user:
(Control Panel > Region & Language > Additional Settings > Date Tab > short date format: “**dd/MM/yyyy**”)
- Screen Saver turn off
- Taskbar to have settings as per screen shots below for each profile.



Peach Software Individual User's Print, email and location Settings

These settings are saved in each user's folder created by Windows. We call it the "Home Drive". The Following instructions automatically create a mapped "H:" drive as each user logs in. It must be labelled "H". Do not create them manually...

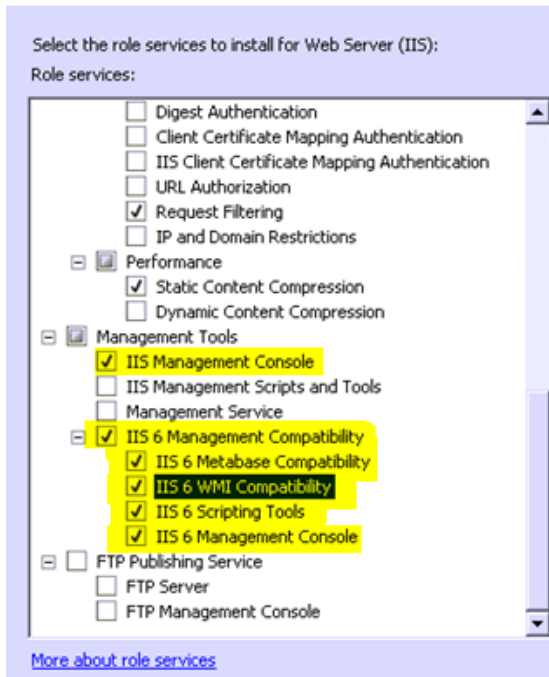
1. **Download & Unzip [User files and folders](#) to each User folder c:\users\%UserName..**
2. **Download & Unzip [StartPeach.bat](#) to c:\users**
 - a. Paste a shortcut from StartPeach.bat to > C:\
 - b. make the name "PEACH" with no extension
Right Click on the shortcut> properties > Run > Select Run Minimised
Right Click on the Shortcut > Advanced > Tick Run in separate Memory Space

If the client was using Peach on terminal server then copy the old "Pbsvb" folder from each user on the old server to the new server's C:\users\%username% for each matching user.

General Server Settings

- Printer names should be kept very short with no spaces or dashes
 - Printers manually mapped to all profiles. Do not use "session" or "redirected" printers.
 - Server to have a Static internal IP Address
 - User Access Control (UAC) - Disabled / Off
 - Port 80 & 81 - forwarded in router to the Server IP. Also Firewalls / Antiviruses given exceptions too.
 - Disconnected sessions to terminate after 5 mins idle.
 1. Start - Run - Enter: **GPEDIT.MSC**
 2. Goto: **Local Computer Policy/ Computer Configuration/ Administrative Templates/ Windows Components/ Remote Desktop Services/ Remote Desktop Session Host/ Session Time Limits**
In the right pane you will find the setting "Set time limit for disconnected sessions" - switch to Enable and choose 5 min time value.
- OR
- Local Computer Policy -> Computer Configuration -> Administrative Templates -> Windows Components -> Terminal Services -> Terminal Server -> Connections -> Configure keep-alive connection interval**

- Install IIS with IIS 6 Management compatibility **Server Manager > Roles > Add Roles > Tick Web Server IIS**
- **Then tick options below.**



Download but don't install the following

Make a folder PeachApps folder on the C drive and put the following downloads there.

- PeachCD: <http://www.peachsoftware.net.au/downloads/peachcd.zip>
- NetSetup: <http://www.peachsoftware.com.au/downloads/netsetup.msi>
- PeachWebServer: <http://www.peachsoftware.com.au/downloads/peachwebserversetup.msi>
- PWS Update: <http://www.peachsoftware.com.au/downloads/peachwebserverupdate.exe>
- Peach Backup: <http://www.peachsoftware.com.au/downloads/peachzip.zip>
- .Net 4.0: http://download.microsoft.com/download/1/B/E/1BE39E79-7E39-46A3-96FF-047F95396215/dotNetFx40_Full_setup.exe

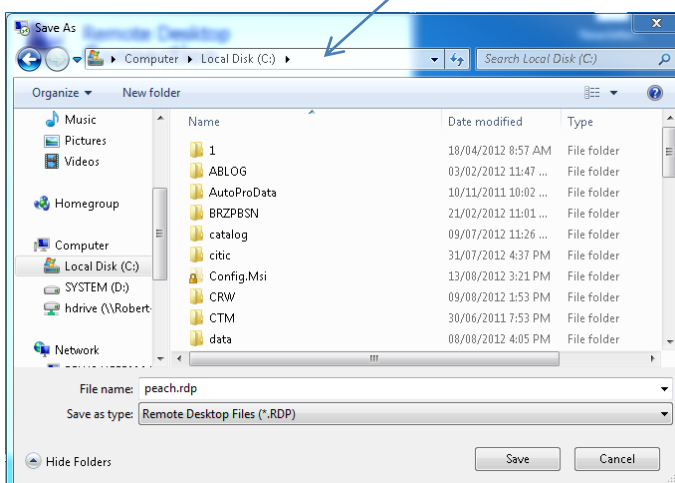
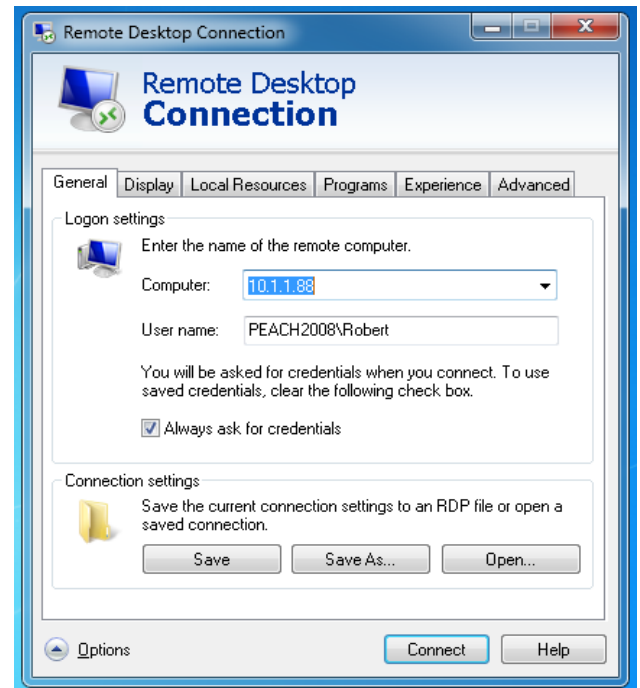
Creating a Peach Shortcut for TSX Remote Application from Thinstuff

On each workstation

1. Download / Save the [TSX Remote application](#) onto each computers desktop that will log into the server
 - a. Once downloaded, run the installer and when asked whether you want the client or server application, **tick** Client and **un-tick** Server.
 - b. Once the program is installed go to Start > All Programs > Accessories > Remote Desktop Connection. When the Connection Wizard appears click Options and you get this

Note:

- In the General Tab set Connection Type to RemoteApp (Seamless)
- In Computer enter the Server Name or IP Address and the user Name
- Untick Always ask for credentials
- In the Resources tab ensure Printers are unticked
- In the programs Tab enter c:\PEACH
- In the Experience Tab select LAN (10 Mbps or Higher)
- Back to the general Tab and click Save As.. c:\peach.rdp



2. Now create a shortcut to it onto your desktop and name it "PEACH" (no extension). Right click it and select properties.
 - a. Set the shortcut properties to
 - Run Minimised
 - Set the Icon to - c:\pbsvb\peach software.ico ([available here as well](#))